

PORTLOCK

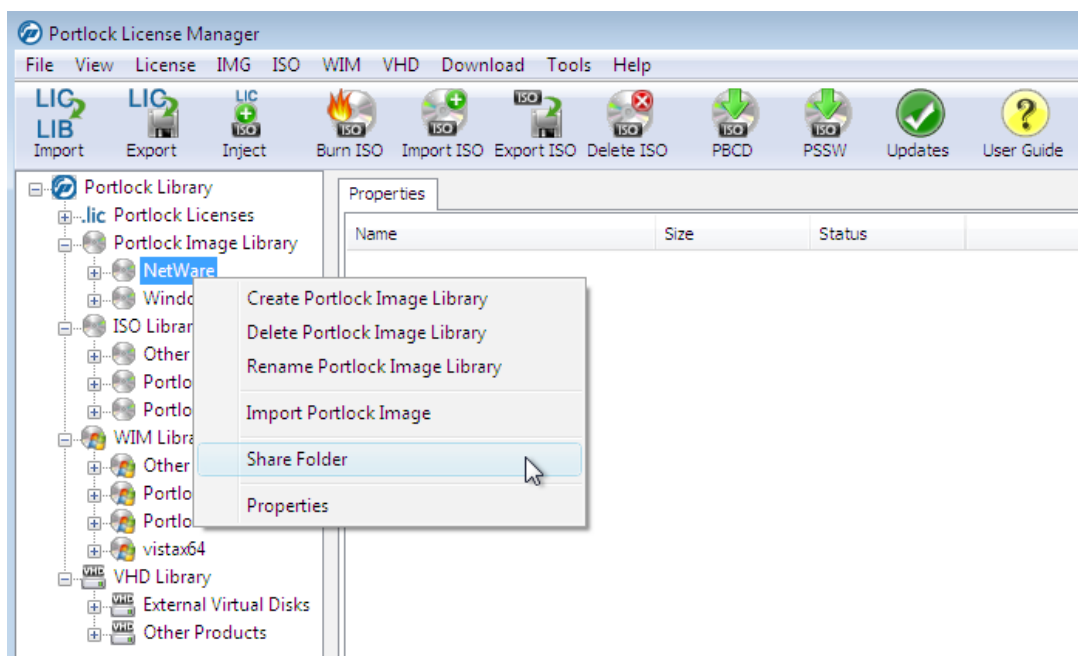
**Using Portlock License Manager to receive
Portlock Storage Manager images**

Using Portlock License Manager to receive Portlock Storage Manager images

Portlock License Manager now has the ability to receive and manage images taken with Portlock Storage Manager. Portlock License Manager displays information about Portlock Storage Manager images, such as the date and time the image was taken, the number of partitions imaged, the sizes of the partitions, the partition type, etc. Portlock License Manager is also an effective tool for organizing Portlock Storage Manager images.

Image to Portlock License Manager

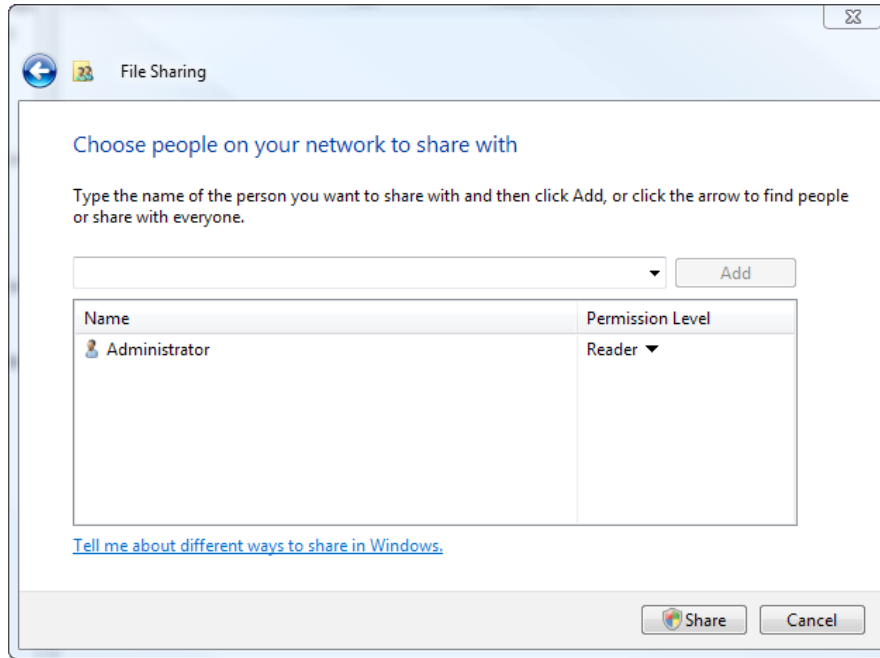
To setup Portlock License Manager to receive images, a network share must be configured from the Portlock Image Library. Start by right-clicking on the desired Portlock Image Library where the image will reside and select "Share Folder." If you wish to first create a separate Image Library for the image, select to "Create Portlock Image Library."



Setup the share with your preferred privileges for the current user only, or for as many users as desired. The drop-down box provides options to select "Everyone" or to "Create a new user" for the network share. Once the privileges are set, select "Share" in the bottom-right corner.

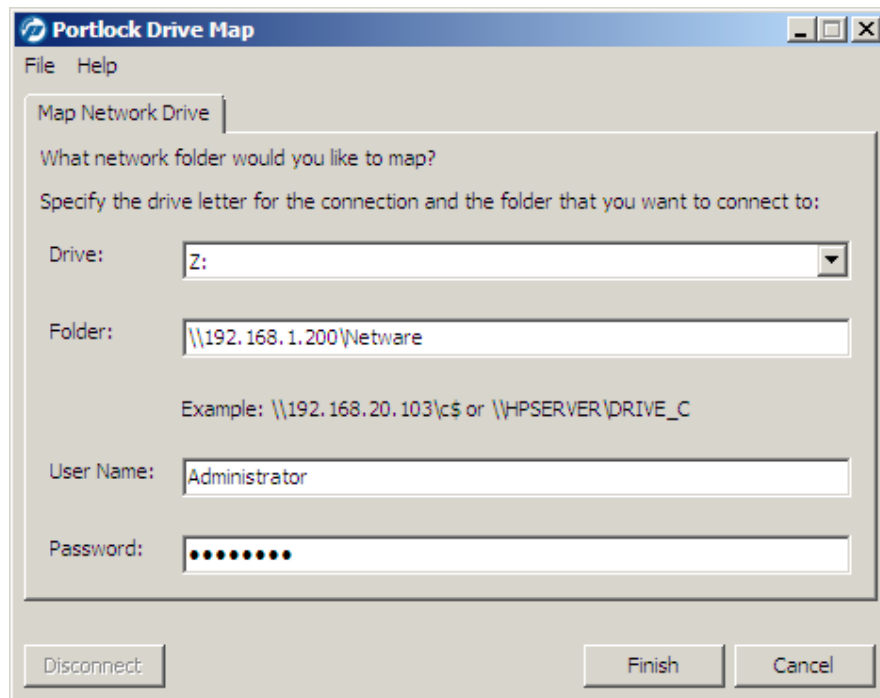
The network share is then setup with the following path: **\\PC-Name\shared folder**

Example: **\\Vista-PC\NetWare**



Now that the network share is setup on the system that is running Portlock License Manager, boot the Portlock Boot CD for NetWare on the NetWare system that is going to be imaged. Once the Portlock Boot CD is up and running, the first step is to map a drive to the network share that was just created from Portlock License Manager. To do this, use Portlock Drive Map found either from the Portlock Boot CD's Welcome menu under "Common Tasks," or from the "Network" tab.

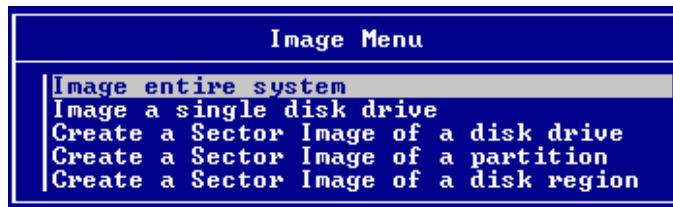
Enter the credentials of the network share into Portlock Drive Map.



Now that a drive is mapped to the network share, open Portlock Storage Manager from the Portlock Boot CD's Welcome screen, or from the Storage tab. At the Main Menu of Portlock Storage Manager, choose the Image Commands and press **Enter**.



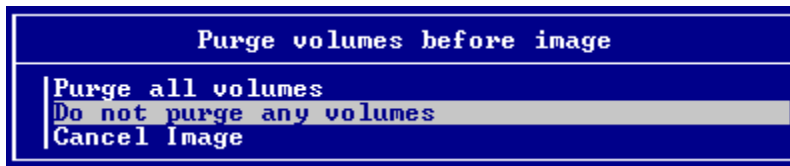
Any one of the items below can be selected for this same scenario, however, for this demonstration we are looking to image our entire system.



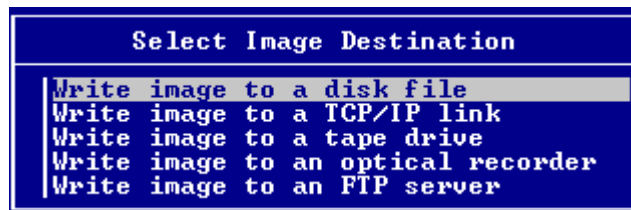
After "Image entire system" is selected, a list of all partitions is displayed. If you wish to skip over a specific partition, select the partition and press **F5**. This will change the status of the partition to "SKIP" as shown below. When ready, press **Enter** and select "Continue and image selected items."

Status	D#	P#	Partition or Volume Type	Size
IMAGE	1	1	[C:\] FAT16 NWLOCALUOL	494 MB
IMAGE	1	2	NSS Pool SYS	7,695 MB
SKIP	2	1	NSS Pool SNAP	8,191 MB

Portlock Storage Manager will provide the option to purge the volumes on the system being imaged. Purging volumes will clean up all deleted files/folders that exist within a volume. This is not a necessary step to image the NetWare system. Press **Enter** to continue.



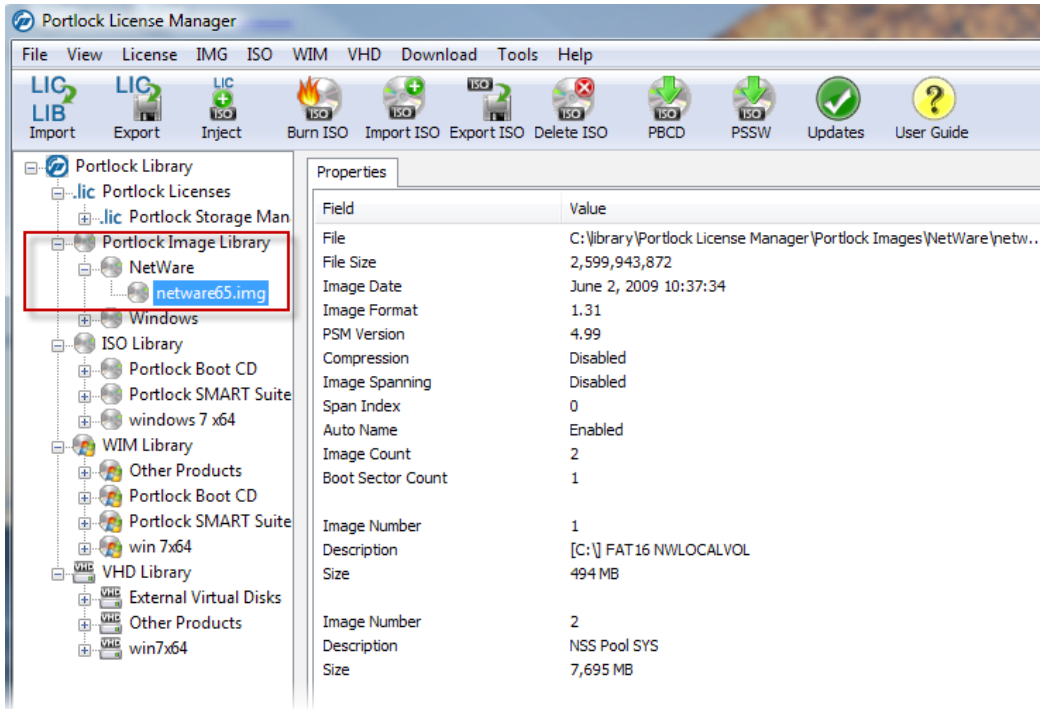
Because we are sending the image to a mapped location which has been assigned a drive letter by the Portlock Boot CD, we will select "Select Image Destination" and then "Write image to a disk file." Press **Enter** to continue.





Using Portlock License Manager to receive Portlock Storage Manager images

The destination system running Portlock License Manager will display the image that was just created in the NetWare Image Library, which is where the network share was created. With the image selected users can now view specific details regarding the image in the right hand pane.

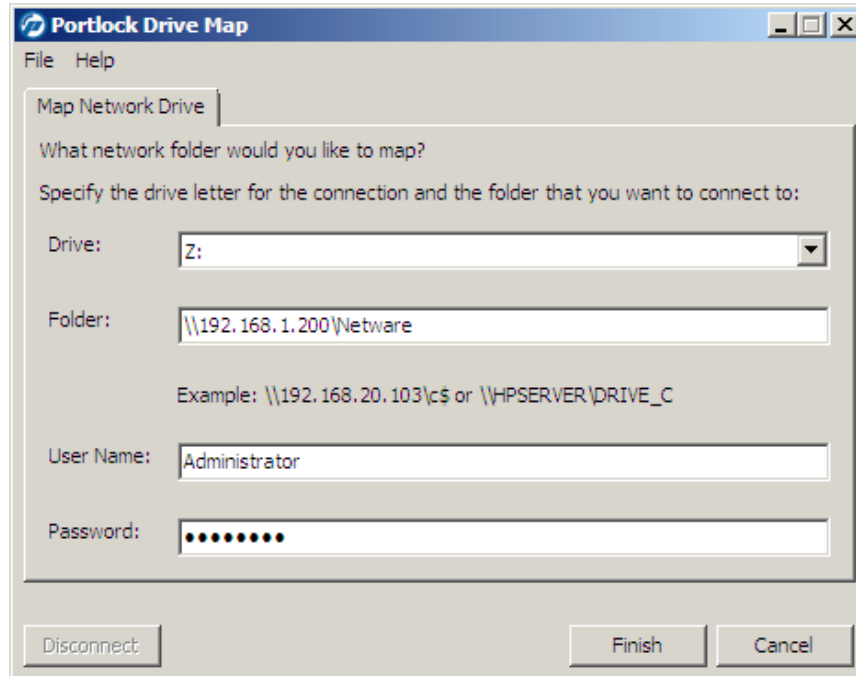




Restore Image from Portlock License Manager

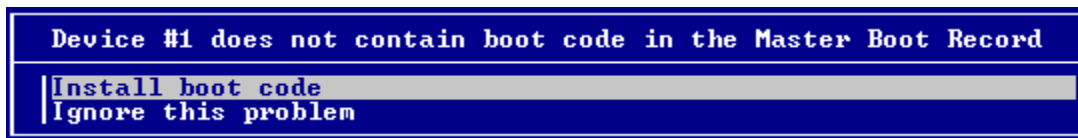
To restore an image that exists within Portlock License Manager, the process is nearly the same as creating the image. Because the “NetWare” library where the image resides has already been setup as a share, all we need to do is once again map a drive from the Portlock Boot CD for NetWare on the system that we will be restoring the image to.

With the Portlock Boot CD for NetWare booted on the system where you will be restoring the image, the first step is to again map a drive to the network share that holds the image. Once the drive has been successfully mapped, the Portlock Drive Map program may be closed.

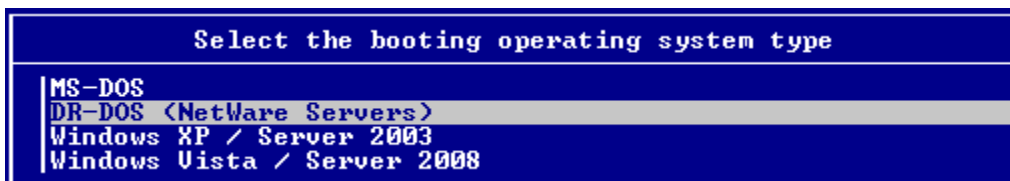


With the shared drive now mapped, open Portlock Storage Manager from the Welcome screen under “Common tasks,” or from the “Storage” tab. Upon starting Portlock Storage Manager, enter the OS and version that is being restored.

If the image is being restored to a new system (bare-metal), Portlock Storage Manager will not recognize the boot code in the Master Boot Record and ask for this to be installed. Select “Install boot code” and press **Enter**.



Select the “DR-DOS” booting partition for NetWare systems and press **Enter**.

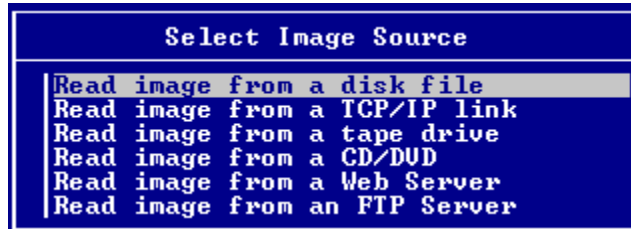




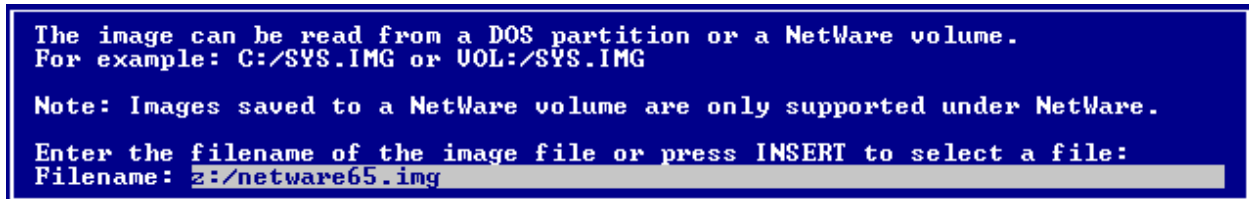
With the boot code now installed for NetWare at the Main Menu of Portlock Storage Manager, select the "Restore Commands." Press **Enter** to continue.



Because we have mapped a drive using the Portlock Boot CD for NetWare, the image source to select from to restore the image will be "Read image from a disk file." Press **Enter** to continue.



Portlock Storage Manager will ask for the location of the image. Again, to clarify the drive letter that has been assigned for the mapped drive, press the **Insert** key at this dialog box to browse. Alternate methods would be to use Portlock Drive Explorer from the Portlock Boot CD for NetWare or use the **diskpart** command from the command prompt.



Once a connection has been established with the previously created image, all available partitions will be displayed for the restore process. To continue and restore the image from Portlock License Manager, press **Enter**.

Status	D#	P#	Partition or Volume	Type	Size
RESTORE 1	1		[C:\]	FAT16 NWLOCALUOL	494 MB
RESTORE 1	2		NSS Pool	SYS	7,695 MB

For the DOS partition, Portlock Storage Manager now gives that ability to resize between a minimum and maximum determined size. To select the default size, press **F10** and select "Create Primary Partition of 494MB."



— End of document —